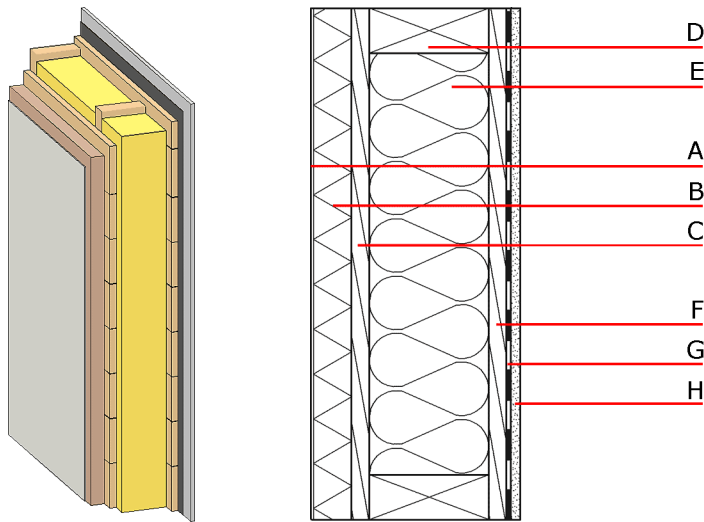


external wall - timber frame construction, not ventilated, without dry lining, with rendering



Performance rating

Fire protection performance	REI	60
-----------------------------	-----	----

maximum ceiling height = 3 m; maximum load  $E_{d,fi}$  = 32,0 kN/m

Classified by MA39

Thermal performance	U[W/(m <sup>2</sup> K)]	0,19
	Diffusion	adequate
	$m_{w,B,A}$ [kg/m <sup>2</sup> ]	28,8

Calculated by HFA

Acoustic performance	$R_w$ (C;C <sub>tr</sub> )	52 (-3; -8)
	$L_{n,w}$ (C <sub>i</sub> )	-

Assessed by MA39

Sustainability*	Ol3 <sub>KON</sub>	-7,2
-----------------	--------------------	------

Calculated by IBO

Register of building materials used for this application, cross-section

(from outside to inside, dimensions in mm)

	Thickness	Building material	Thermal performance				Reaction to fire EN
			$\lambda$	$\mu$ min - max	$\rho$	c	
A	4,0	plaster	1,000	10 - 35	2000	1,130	A1
B	50,0	wood wool composite boards	0,090	2 - 5	370	2,000	B
C	24,0	spruce wood closed cladding without spacing of cladding boards	0,120	50	450	1,600	D
D	200,0	finger-jointed solid construction timber (60/...; e=625)	0,120	50	450	1,600	D
E	200,0	glass wool [0,0040; R=16]	0,040	1	16	1,030	A1
F	24,0	spruce wood closed cladding without spacing of cladding boards	0,120	50	450	1,600	D
G		vapour barrier sd $\geq$ 7m				1000	
H	12,5	gypsum plasterboards with improved properties at high temperatures (fire) or	0,250	10	800	1,050	A2
H	12,5	gypsum fibre board	0,320	21	1000	1,100	A2

\*Details of sustainability rating

GWP [kg CO <sub>2</sub> Äqv.]	AP [kg SO <sub>2</sub> Äqv.]	PEI ne [MJ]	PEI e [MJ]	EP [kg PO <sub>4</sub> Äqv.]	POCP [kg C <sub>2</sub> H <sub>4</sub> Äqv.]
-39,3	0,153	457,8	766,8	0,023	0,008

Mass per unit area

m [kg/m <sup>2</sup> ]	calculation based on
70,40	gypsum plasterboard (DF)